

# Arabian Ruling Family and Government Charts Business Intelligence

April 2022

**Family trees - current version numbers. Prices on page 3 below.**

- Saud (Saudi Arabia) v27.2
- Sudairi (Saudi Arabia) v4.1
- Aal-al Shaikh (Saudi Arabia) v3.5
- Sabah (Kuwait) v19.5
- Khalifa (Bahrain) v20.0
- Thani (Qatar) v24.2
- Attiyah (Qatar) v9.2
- Nahyan (Abu Dhabi) v27.1
- Maktoum (Dubai) v20.5
- Qassimi (Sharjah/RAK) v13.5
- Busaidi (Oman) v12.4
- Alaoui and advisers (Morocco) v1.1

## **Government Organisation Charts:**

- Saudi Arabia – Government and State Enterprises v30.3
- Kuwait – Government, Politics and State Enterprises v13.0
- Bahrain – Government, Politics and State Enterprises v10.0
- Qatar – Government and State Enterprises v16.1
- UAE Federal Government and State Enterprises v6.0
- Abu Dhabi – Government and State Enterprises v30.1
- Dubai – Government and State Enterprises v23.5
- Oman – Government and State Enterprises v12.0

**The version numbers of charts advance regularly, as the charts are updated.**

## **Contents of family trees:**

The trees contain every adult member of the families - male and female - who is active in any sphere of public life. In the smaller families all male members are included. Below each name is an objective profile, which includes such details as age, education, positions held in the past, current job, business interests, rôle in the family/reputation, wife/husband and children, and whatever other information seems relevant. In effect the trees are a guide to power, influence, connections and wealth in the most important parts of the Arabian establishment

**Rulers' names are in green, ministers and heads of important state agencies are in blue, women in red.** The different branches of the families are clearly defined.

## **Formats:**

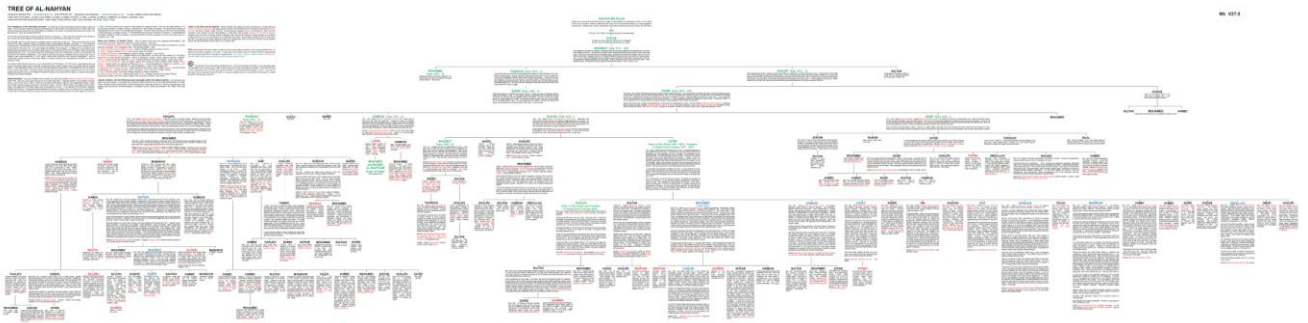
Normal chart sizes are given on pages 4 and 5 below. These sizes can be used as wall charts, or folded concertina-wise. Charts are also available in reduced size – about 60% of the dimensions given. The smaller charts are best folded. All charts are shipped unfolded in tubes.

**Michael Field**  
00.44.7876.593.145  
[michael@mcsfield.com](mailto:michael@mcsfield.com)

# Examples

The illustrations of charts on this page are not intended to be legible. They are supposed to give an impression of what the charts look like.

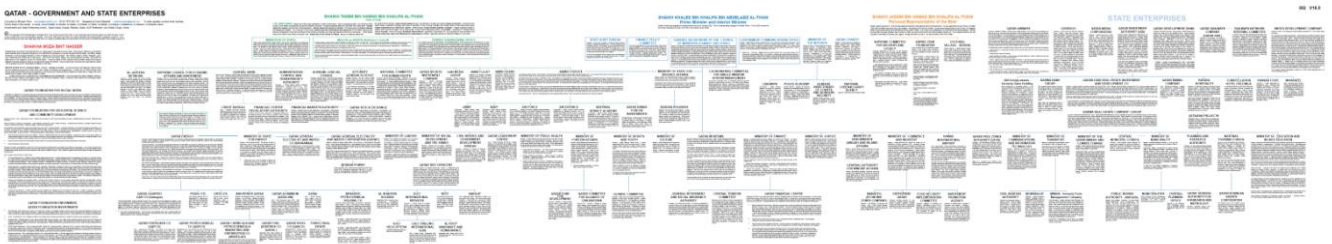
## Al-Nahyan



## Saudi Arabia – Government and State Enterprises



## Qatar – Government and State Enterprises



## Terms of Sale - prices in US dollars

Saud	\$ 3,700
Sudairi	\$ 1,200
Aal-al Shaikh	\$ 1,200
Sabah	\$ 2,250
Khalifa	\$ 2,250
Thani	\$ 2,700
Attiyah	\$ 1,350
Nahyan	\$ 1,800
Maktoum	\$ 1,600
Qassimi	\$ 1,350
Busaidi	\$ 1,800
Alaoui	\$ 1,000
Saudi Arabia – Government and State Enterprises	\$ 2,800
Kuwait – Government, Politics and State Enterprises	\$ 2,250
Bahrain – Government, Politics and State Enterprises	\$ 2,250
Qatar – Government and State Enterprises	\$ 2,250
UAE Federal Government and State Enterprises	\$ 2,250
Abu Dhabi – Government and State Enterprises	\$ 2,250
Dubai – Government and State Enterprises	\$ 2,250
Oman – Government and State Enterprises	\$ 2,250

**Updated versions - prices:** The charts are continually improved and updated. New names are added and more information is given in the notes under the names. Clients who have bought charts on a one off basis may buy new versions of their charts at any time. **Clients who order charts regularly – every two or three versions or every two or three years – can buy updated charts at 50 per cent of the figures above.** Clients may buy more than one copy of any chart. Additional copies cost \$300. Additional copies at this price are for clients' own use only. They must not be given away to other companies or individuals.

### Subscriptions:

Clients can subscribe to all or some of the charts. Subscriptions work as follows:

- Clients receive updated charts in PDF as they appear – some charts may be updated three or four times a year. Updates are marked with **yellow patches**.
- Clients may print their own charts as and when they need. If they want to have charts sent from London, this can be arranged at printing cost.
- If clients want charts for printing without yellow patches they can ask me.
- The understanding is that clients who subscribe to this service will continue to take the charts for several years. This is a quid pro quo for subscriptions costing a lot less than the total of the charts individually.
- I am available to subscribers to answer their questions by telephone or email. I can sometimes add substantially to what is in the charts.

### Subscription prices:

The full set of all the Family Trees and Government charts costs	\$15,000
Subscriptions to just the Ruling Family Trees or just the Government charts cost	\$7,500
Subscriptions to just the Saudi, Qatar, or Abu Dhabi + UAE Federal charts cost	\$3,000
Subscriptions to just the Kuwait, Bahrain, Dubai + UAE Federal, or Oman charts	\$2,000
Subscriptions to all 6 UAE charts – 3 family trees, 3 government charts cost	\$5,000

**Courier:** When documents are despatched by courier outside the UK clients pay the courier cost - for one to three charts \$80.

**How to Buy and Pay:** You tell me what charts you want by email or telephone. I send them to you along with a signed emailed invoice. I do not expect payment in advance, but I do ask clients to pay immediately they receive the charts. I trust them to do this. I assume when customers make an order that they have read and accept these conditions.

## © Copyright

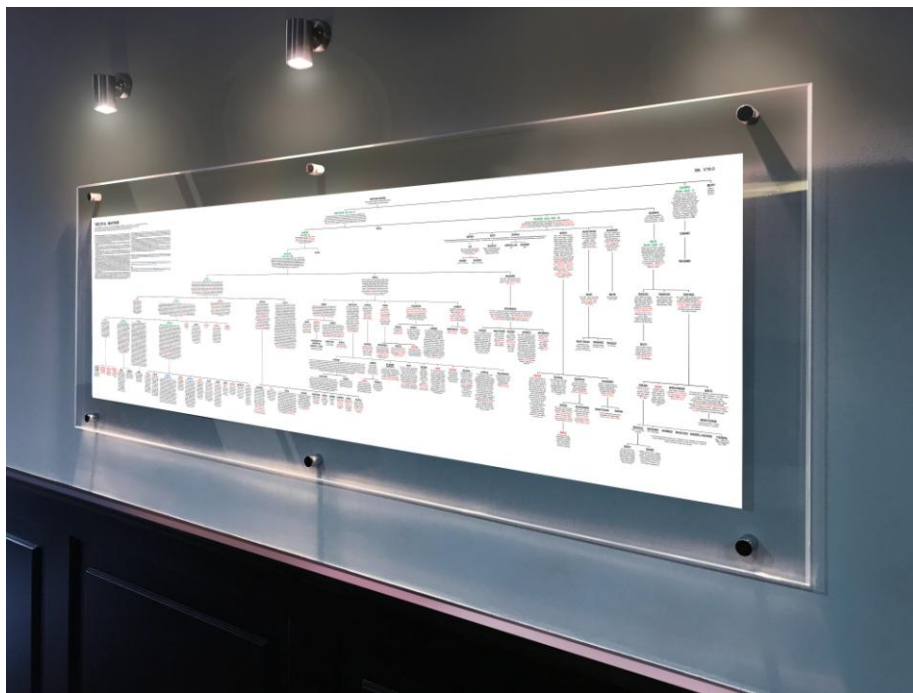
The copyright of these charts belongs to Michael Field. If you are the buyer of a chart you must not sell it or give it away without the author's permission, even if you buy an update. If you have a chart in PDF, you must not transfer it to the computer of another person outside your company. If you move to another company or partnership, you must not take any chart or charts with you, either on paper or in PDF.

Please do not buy these charts from anyone other than Michael Field or David Marshall. Buying from second hand sources is illegal – it is a breach of copyright – and it results in clients buying out of date charts – see the note on version numbers on page 1

## Mounting charts:

I recommend the system illustrated below. This uses large transparent plastic (acrylic) sheets which screw together with the charts between them. New charts – which may be bigger than previous versions – can easily be put in to replace old ones.

**Dubai, Abu Dhabi, Oman** - Integrate Advertising – Al Maktab Building, 6th floor, office 604, Al-Barsha First, Dubai. Gary Nigoghossian [gary@integrateadv.com](mailto:gary@integrateadv.com) (04).347.0741 Mob 050-624.9034 The company can work with paper charts or from PDFs. It can ship charts to Abu Dhabi and Oman for a modest cost.



**Abu Dhabi** - Gulf Colour Film Photography. Nikhil Shetty 02.677.3264 / 677.8994  
050.492.9338 [info@gulfcolour.com](mailto:info@gulfcolour.com) Bldg. No. 37, Tanker Mai Area (near to ADDC), opposite  
Zayed University, perpendicular to Delma Street (13th Street).

**Qatar** - Gulf Crafts, building 40, street 9, zone 81 of the New Industrial Area.  
Contact – Levon Ohanian [levon@gulfcrafts.net](mailto:levon@gulfcrafts.net) 4460.2002 mobile 7031.5212  
This company can mount charts between acrylic sheets up to 3m long, which will involve  
printing some of the family tree charts to slightly smaller dimensions than shown below.

**Kuwait** - Al-Hafiz Signage Centre, Abdullah Al-Mubarak Street, Roomi Complex, Mirqab.  
Sales manager – Faisal Jameel [mfaisal@alhafiz.com](mailto:mfaisal@alhafiz.com) [press@alhafiz.com](mailto:press@alhafiz.com) 2475.3123  
2475.0150 9770.2648

**Bahrain** - For printing the Xerox Centre in Juffair 1781.5444  
For mounting Union Plastics, Hidd, Muharraq 1773.8161 Contact Mr Aoun Kumar  
3606.0595 [595@unionplastics.biz](mailto:595@unionplastics.biz)

**Riyadh** - acrylic boards are supplied by Al Jabreen Leather Factory CEO – Dr Adel  
Abdulrazaq 011.265.0206 055.516.5011 [jabreenleather@gmail.com](mailto:jabreenleather@gmail.com) Printed charts can be  
shipped from London. Maximum length of sheets is 2.5m. The larger charts can be mounted  
between two sets of sheets, with a join in the middle. If the work is done carefully the join is not  
very conspicuous.

**Approximate Sizes of Charts – in metres:** The dimensions below are for full size charts  
shipped from London. These sizes can be used as wall charts or folded concertina-wise.  
Reduced size charts for folding are also available – at about 60% of these dimensions. Charts  
can be printed to any size from PDFs – but note, if a chart is to be displayed on a wall it cannot  
be very much smaller than the dimensions below or it will become difficult to read.

Al-Saud	4.3 x 0.7	Government of Saudi Arabia	3.1 x 0.6
Al-Sudairi	2.5 x 0.5	Government of Kuwait	2.9 x 0.5
Al-Sabah	3.6 x 0.7	Government of Bahrain	2.6 x 0.5
Al-Khalifa	3.2 x 0.7	Government of Qatar	2.7 x 0.5
Al-Thani	3.7 x 0.7	Government of UAE Federation	1.8 x 0.5
Al-Attiyah	2.1 x 0.6	Government of Abu Dhabi	2.3 x 0.5
Al-Nahyan	2.2 x 0.6	Government of Dubai	2.2 x 0.5
Al-Maktoum	1.9 x 0.5	Government of Oman	2.6 x 0.6
Al-Qassimi	3.0 x 0.5		
Al-Busaidi	2.7 x 0.5		
Al-Alaoui	2.2 x 0.7		
Aal-al Shaikh	2.2 x 0.4		