

Arabian Ruling Family and Government Charts Business Intelligence

Family trees - current version numbers. Prices on page 3 below.

- Saud (Saudi Arabia) v26.0
- Sudairi (Saudi Arabia) v3.9
- Aal-al Shaikh (Saudi Arabia) v3.4
- Sabah (Kuwait) v18.1
- Khalifa (Bahrain) v19.0
- Thani (Qatar) v23.1
- Attiyah (Qatar) v8.8
- Nahyan (Abu Dhabi) v26.0
- Maktoum (Dubai) v19.6
- Qassimi (Sharjah/RAK) v13.1
- Busaidi (Oman) v12.0
- Alaoui and advisers (Morocco) v1.0

Government Organisation Charts:

- Saudi Arabia – Government and State Enterprises v27.0
- Kuwait – Government, Politics and State Enterprises v11.1
- Bahrain – Government, Politics and State Enterprises v8.1
- Qatar – Government and State Enterprises v15.1
- UAE Federal Government and State Enterprises v2.5
- Abu Dhabi – Government and State Enterprises v26.1
- Dubai – Government and State Enterprises v22.1
- Oman – Government and State Enterprises v7.0

The version numbers of charts advance regularly, as the charts are updated.

Contents of family trees:

The trees contain every adult member of the families - male and female - who is active in any sphere of public life. In the smaller families all male members are included. Below each name is an objective profile, which includes such details as age, education, positions held in the past, current job, business interests, rôle in the family/reputation, wife/husband and children, and whatever other information seems relevant. In effect the trees are a guide to power, influence, connections and wealth in the most important parts of the Arabian establishment

Rulers' names are in green, ministers and heads of important state agencies are in blue, women in red. The different branches of the families are clearly defined.

Formats:

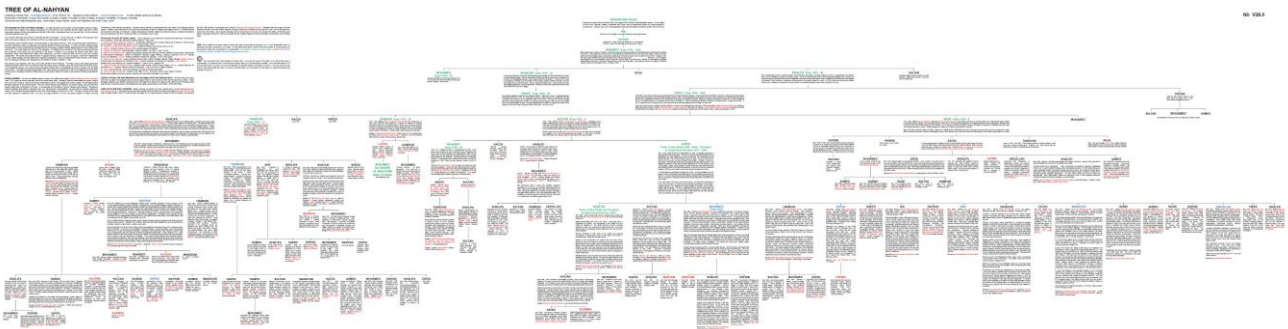
Normal chart sizes are given on pages 4 and 5 below. These sizes can be used as wall charts, or folded concertina-wise. Charts are also available in reduced size – about 60% of the dimensions given. The smaller charts are best folded. All charts are shipped unfolded in tubes.

Michael Field
00.44.7876.593.145
michael@mcsfield.com

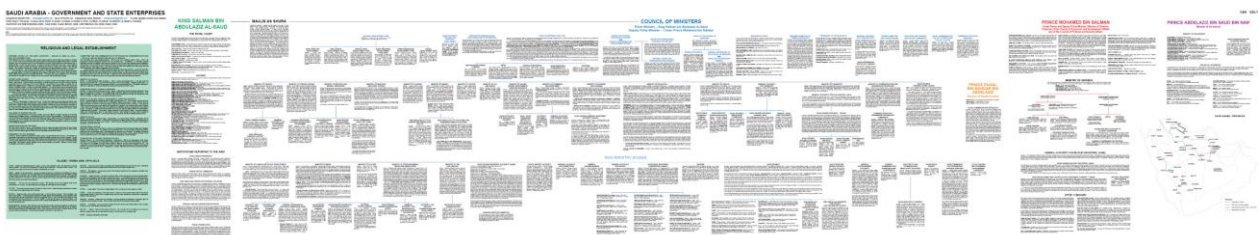
Examples

The illustrations of charts on this page are not intended to be legible. They are supposed to give an impression of what the charts look like.

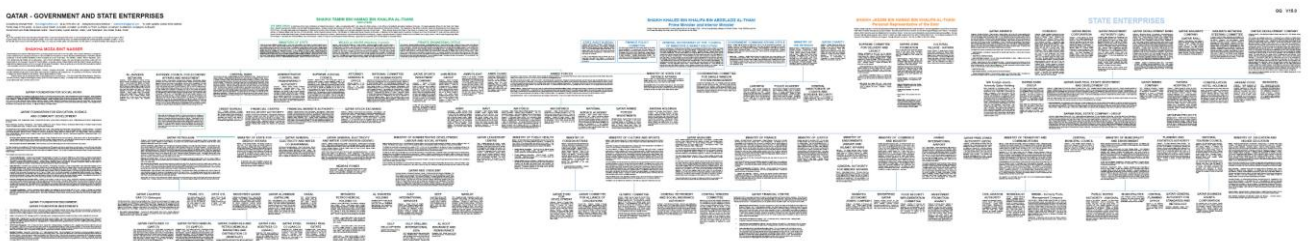
Al-Nahyan



Saudi Arabia – Government and State Enterprises



Qatar – Government and State Enterprises



Terms of Sale - prices in US dollars

Saud	\$ 3,700
Sudairi	\$ 1,200
Aal-al Shaikh	\$ 1,200
Sabah	\$ 2,250
Khalifa	\$ 2,250
Thani	\$ 2,700
Attiyah	\$ 1,350
Nahyan	\$ 1,800
Maktoum	\$ 1,350
Qassimi	\$ 1,350
Busaidi	\$ 1,500
Alaoui	\$ 1,000
Saudi Arabia – Government and State Enterprises	\$ 2,800
Kuwait – Government, Politics and State Enterprises	\$ 2,250
Bahrain – Government, Politics and State Enterprises	\$ 2,250
Qatar – Government and State Enterprises	\$ 2,250
UAE Federal Government and State Enterprises	\$ 1,500
Abu Dhabi – Government and State Enterprises	\$ 2,250
Dubai – Government and State Enterprises	\$ 2,250
Oman – Government and State Enterprises	\$ 2,250

Updated versions - prices: The charts are continually improved and updated. New names are added and more information is given in the notes under the names. Clients who have bought charts on a one off basis may buy new versions of their charts at any time. **Clients who order charts regularly – every two or three versions or every two or three years – can buy updated charts at 50 per cent of the figures above.** Clients may buy more than one copy of any chart. Additional copies cost \$300. Additional copies at this price are for clients' own use only. They must not be given away to other companies or individuals.

Subscriptions:

Clients can subscribe to all the charts, with regular updates, for \$15,000 a year. For this they get:

- All updated charts in PDF as they appear – some charts may be updated two or three times a year. Updates are marked with **yellow patches**.
- Clients may print their own charts as and when they need. If they want to have charts sent from London, this can be arranged at printing cost.
- Payment to be made within **30 days** of clients receiving the annual invoice.
- The understanding is that clients who subscribe to this service will continue to take the charts for several years. This is a quid pro quo for subscriptions costing a lot less than the total of the charts individually.
- I am available to subscribers to answer their questions by telephone or email. I can sometimes add substantially to what is in the charts.

Part Subscriptions:

Subscriptions to just the Ruling Family Trees or just the Government charts cost	\$7,500
Subscriptions to just the Saudi, Qatari or Abu Dhabi and Federal charts cost	\$3,000
Subscriptions to just the Kuwaiti, Bahraini, Dubai and Federal, or Omani charts cost	\$2,000
Subscriptions to all 6 UAE charts – 3 family trees, 3 government charts cost	\$4,500

Courier: When documents are despatched by courier outside the UK clients pay the courier cost - for one to three charts about \$70.

How to Buy and Pay: You tell me what charts you want by email or telephone. I send them to you along with a signed emailed invoice. I do not expect payment in advance but I do ask clients to pay immediately they receive the charts. I trust them to do this. I assume when customers make an order that they have read and accept these conditions.

© Copyright -

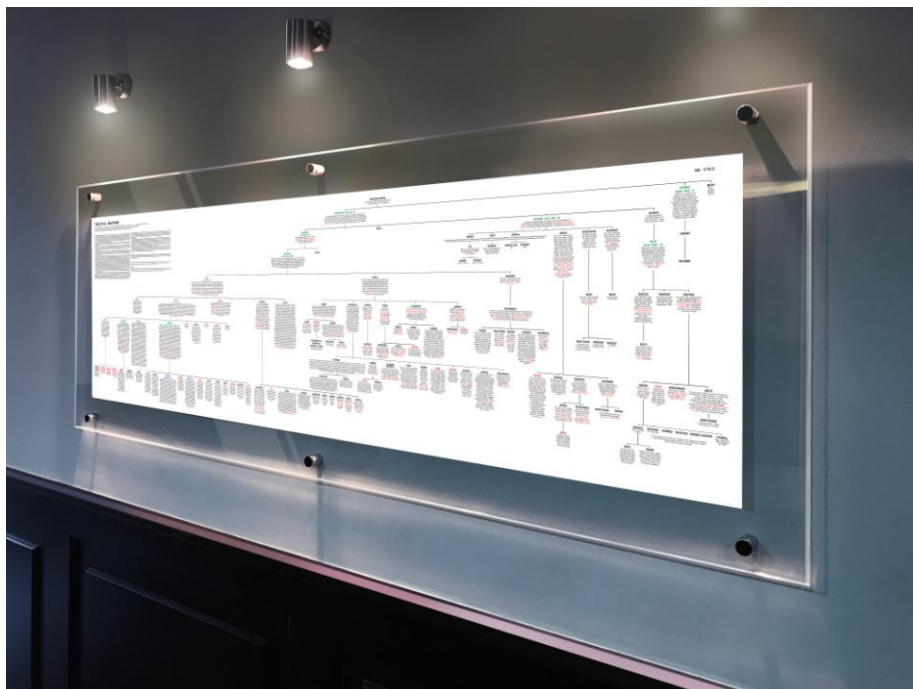
The copyright of these charts belongs to Michael Field. If you are the buyer of a chart you must not sell it or give it away without the author's permission, even if you buy an update. If you have a chart in PDF, you must not transfer it to the computer of another person outside your company.

Please do not buy these charts from anyone other than Michael Field or David Marshall. Buying from second hand sources is illegal – it is a breach of copyright – and it results in clients buying out of date charts – see the note on version numbers on page 1

Mounting charts:

I recommend the system illustrated below. This uses large transparent plastic (acrylic) sheets which screw together with the charts between them. New charts – which may be bigger than previous versions – can easily be put in to replace old ones.

Dubai, Abu Dhabi, Oman - Integrate Advertising – Al Maktab Building, 6th floor, office 604, Al-Barsha First, Dubai. Gary Nigoghossian gary@integrateadv.com (04).347.0741 Mob 050-624.9034 The company can work with paper charts or from PDFs. It can ship charts to Abu Dhabi and Oman for a modest cost.



Abu Dhabi - Gulf Colour Film Photography. Nikhil Shetty 02.677.3264 / 677.8994
050.492.9338 info@gulfcolour.com Bldg. No. 37, Tanker Mai Area (near to ADDC), opposite
Zayed University, perpendicular to Delma Street (13th Street).

Qatar - Gulf Crafts, building 40, street 9, zone 81 of the New Industrial Area.
Contact – Levon Ohanian levon@gulfcrafts.net 4460.2002 mobile 7031.5212
This company can mount charts between acrylic sheets up to 3m long, which will involve
printing some of the family tree charts to slightly smaller dimensions than shown below.

Kuwait - Al-Hafiz Signage Centre, Abdullah Al-Mubarak Street, Roomi Complex, Mirqab.
Sales manager – Faisal Jameel mfaisal@alhafiz.com press@alhafiz.com 2475.3123
2475.0150 9770.2648

Bahrain - For printing the Xerox Centre in Juffair 1781.5444
For mounting Union Plastics, Hidd, Muharraq 1773.8161 Contact Mr Aoun Kumar
3606.0595 595@unionplastics.biz

Approximate Sizes of Charts: The dimensions below are for full size charts shipped from London. These sizes can be used as wall charts or folded concertina-wise. Reduced size charts are also available – at about 60% of these dimensions. Charts can be printed to any size from PDFs – but note, if a chart is to be displayed on a wall it cannot be very much smaller than the dimensions below, or it will become difficult to read.

Al-Saud	4.2 x 0.7 metres
Al-Sudairi	2.5 x 0.5
Al-Sabah	3.3 x 0.6
Al-Khalifa	3.1 x 0.7
Al-Thani	3.3 x 0.7
Al-Attiyah	2.1 x 0.6
Al-Nahyan	2.1 x 0.6
Al-Maktoum	1.8 x 0.5
Al-Qassimi	2.8 x 0.5
Al-Busaidi	2.7 x 0.5
Government of Saudi Arabia	2.9 x 0.6
Government of Kuwait	2.8 x 0.5
Government of Bahrain	2.6 x 0.5
Government of Qatar	2.7 x 0.5
Government of UAE Federation	1.3 x 0.5
Government of Abu Dhabi	2.5 x 0.5
Government of Dubai	2.3 x 0.5
Government of Oman	2.6 x 0.6